

## INSTALLATION INSTRUCTIONS

DESCRIPTION: Overfender Kit  
PART NUMBER: 2HC-F15E0-V0  
MODEL: YXZ1000R



### ⚠ WARNING

Please read and understand these instructions completely before installation to avoid possible injury to yourself, or damage to the accessory or vehicle.

### NOTICE:

This installation requires a torque wrench and should be performed by an authorized Yamaha dealer or other qualified technician.

### WARRANTY INFORMATION:

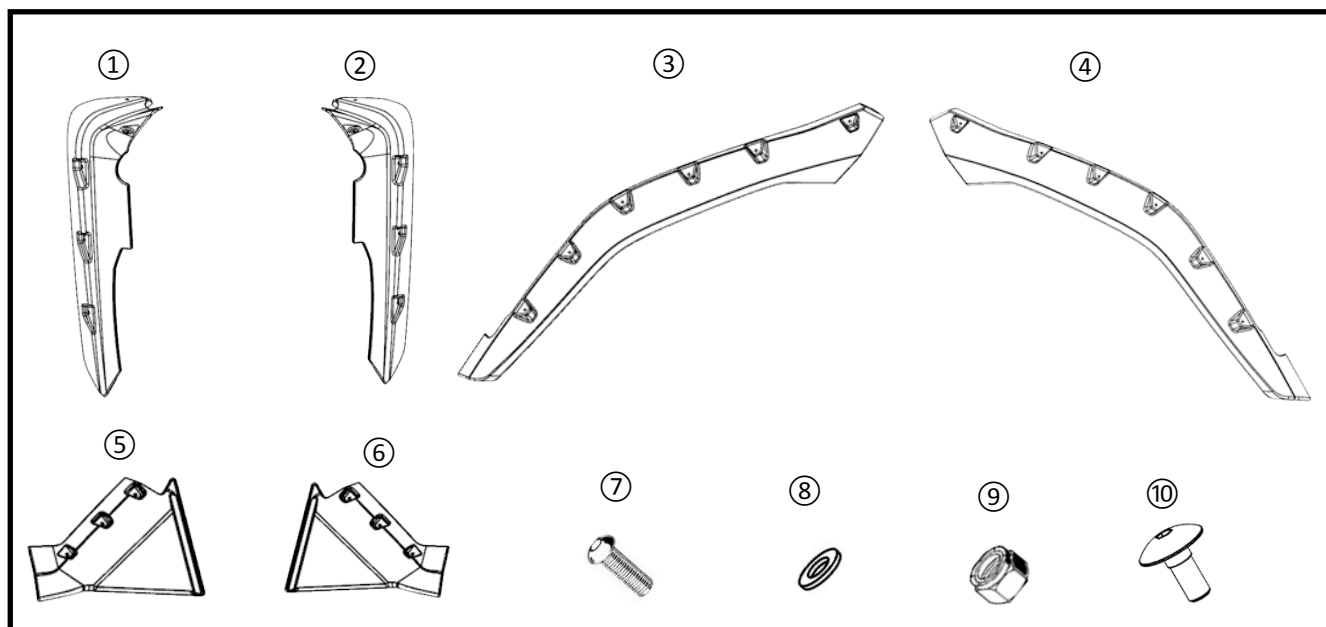
Genuine Yamaha accessories are covered by a one-year limited warranty against defects in material or workmanship. Labor for replacement of defective components is not covered. See your Yamaha dealer for a copy of the warranty statement.

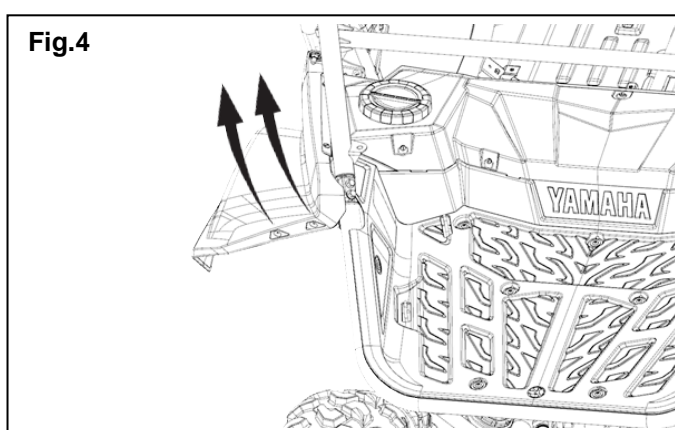
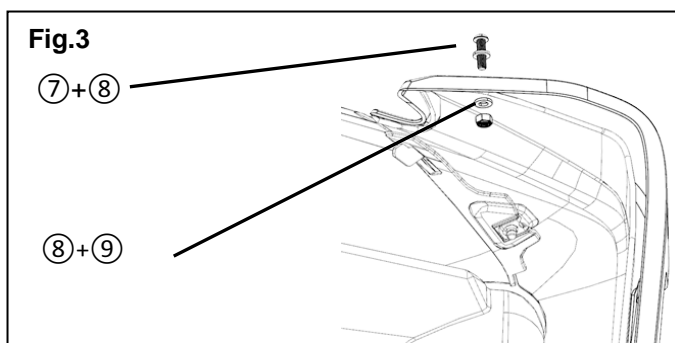
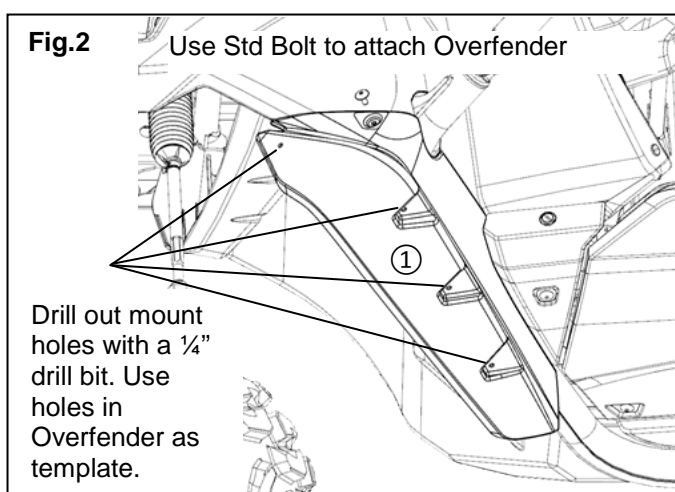
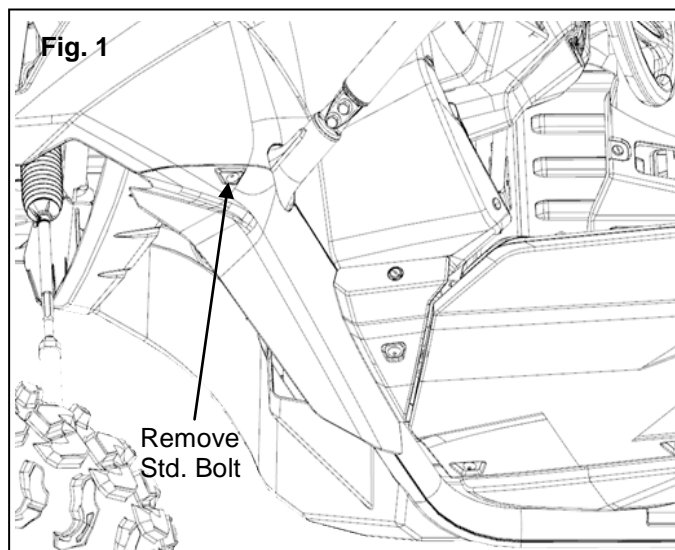
### DEALER OR INSTALLER:

These instructions contain important information for future reference and *must* be given to the customer.

No.	Part Number	Description	Qty
*	2HC-F14E0-V0	Overfender Kit	--
①	*	Left Front Overfender	1
②	*	Right Front Overfender	1
③	*	Left Rear Overfender	1
④	*	Right Rear Overfender	1
⑤	*	Left Rear Inner Overfender	1
⑥	*	Right Rear Inner Overfender	1
⑦	*	Button Head Hex Bolt 16mm	20
⑧	*	Washer	42
⑨	*	Nylock Nut	22
⑩	*	Large Button Head Hex Bolt 16mm	2

\* Part supplied with kit only and not available separately.





#### PREPARATION:

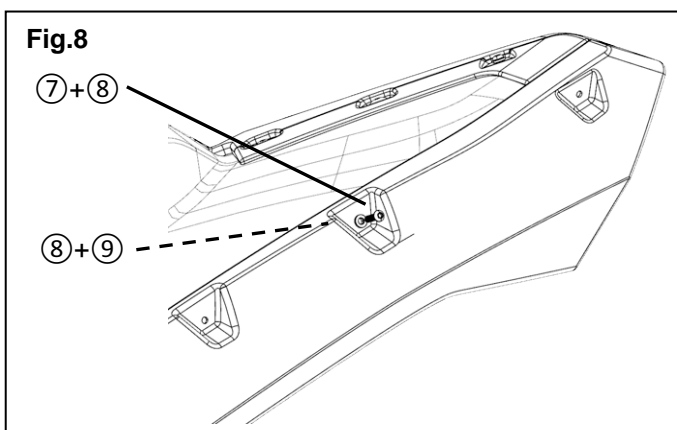
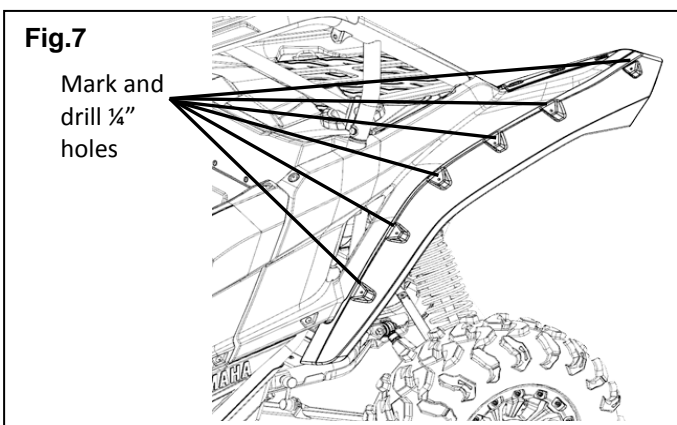
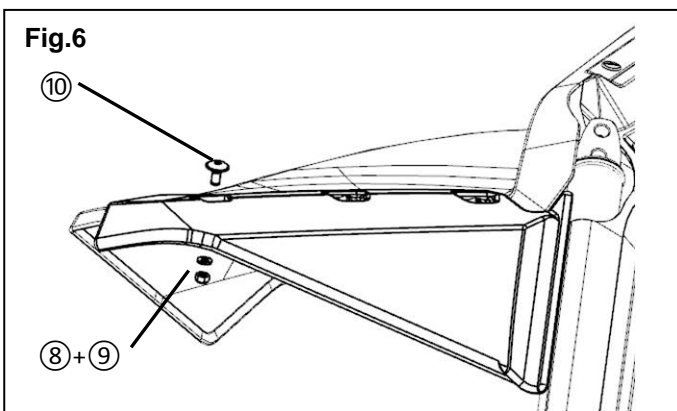
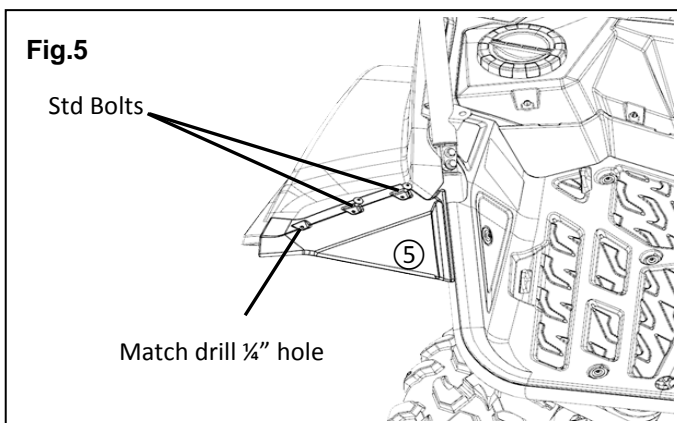
- Place vehicle on a secure and level surface.
- Set the parking brake.
- Clean all mounting surfaces before installation.

#### INSTALLATION:

1. Start on the left front. Remove the bolt closest to the front of the vehicle that holds the stock fender (see Fig.1 arrow).
2. Install the Left Front Overfender ① over the stock fender. Use the bolt you just removed to secure the front of the overfender to the vehicle.
3. Hold the Left Front Overfender in place using clamp or have an assistant hold it in place.
4. Use a 1/4" drill bit (6.5 mm) to match drill 4 holes as shown in Fig. 2. **TIP:** Maintain shallow drill bit penetration, i.e. no more than 1/2" – on fenders.

**TIP:** Drill one hole first, install a bolt assembly, and then move on to the next. Align and adjust the Overfender as you go.

5. Place a Washer ⑧ on a Button Head Hex Bolt 16mm ⑦ and insert the bolt through the Overfender.
6. From the backside of the stock fender, place a Washer ⑧ and Nylock Nut ⑨ on the bolt loosely. (Fig. 3).
7. Install 4 of these assemblies to secure the Left Front Overfender.
8. Tighten the nuts to 4 Nm (3 ft-lb). **NOTICE:** The plastic could be damaged by over tightening.
9. Repeat steps 1 through 8 on the right side of the vehicle to install the Right Front Overfender ②.
10. Working at the left rear fender of the vehicle, remove the two stock bolts as shown in Fig. 4.
11. Overlay Left Rear Inner Overfender on top of Left Rear Fender and re-install 2 stock bolts removed in Step 10. Drill the third hole as shown in Fig. 5.
12. Insert the Large Button Head Hex Bolt 16mm ⑩ through the Left Rear Inner Overfender ⑤.
13. From underneath, install a Washer ⑧ and Nylock Nut ⑨ to the bolt. Tighten the nut to 4 Nm (3 ft-lb). See Fig.6.
14. Overlay the Left Rear Overfender ③ directly over the stock rear fender. You can use a wood clamp to hold the Overfender tightly to



the Rear Fender. Use the Overfender as a drill template and drill 6 holes as shown using 1/4" drill bit. See Fig. 7.

15. Place a Washer ⑧ on a Button Head Hex Bolt 16mm ⑦ and insert the bolt through the Overfender.
16. From the backside of the stock fender, place a Washer ⑧ and Nylock Nut ⑨ on the bolt loosely. (Fig. 3).
17. Tighten the nuts to 4 Nm (3 ft-lb). **NOTICE: The plastic could be damaged by over tightening.**
18. Repeat steps 10 through 17 on the right side of the vehicle to install the Right Rear Inner Overfender ⑥ and Right Rear Overfender ④.

#### MAINTENANCE:

Check and adjust as necessary.

#### CARE AND CLEANING:

Wash with a mild soap and water solution using a soft cloth. Using Yamacoat™ spray (ACC-YAMAC-OA-TC), available from your Yamaha dealer, will help keep the overfenders and other plastics easy to clean and looking new.

#### CUSTOMER SERVICE:

For further information see your Yamaha dealer.

**ESTIMATED TIME TO INSTALL: 1.0 HR**